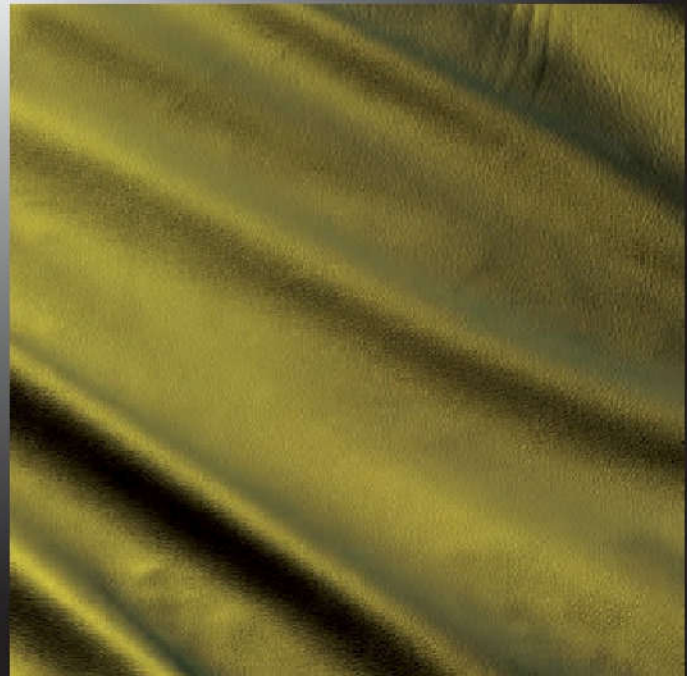
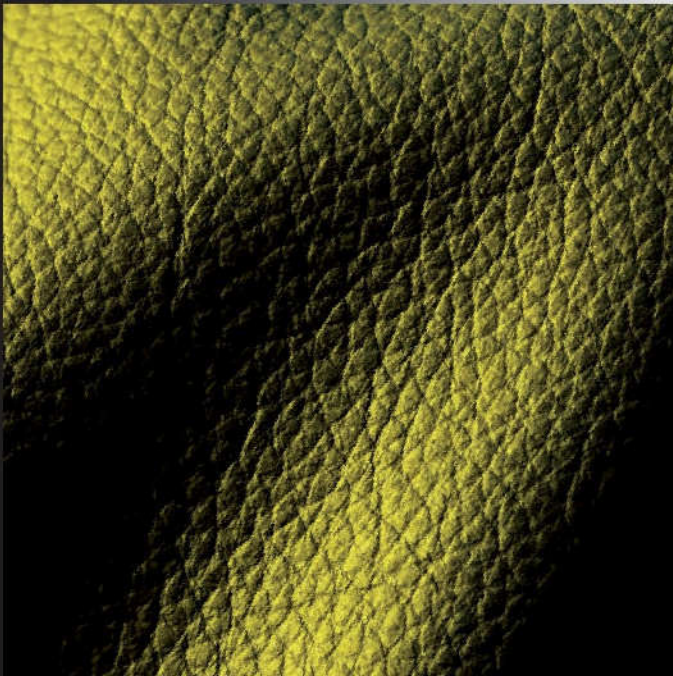
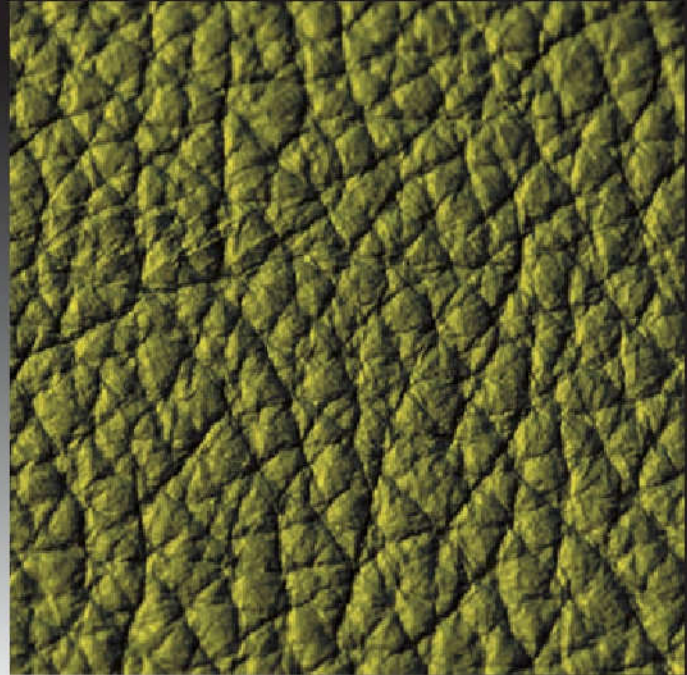
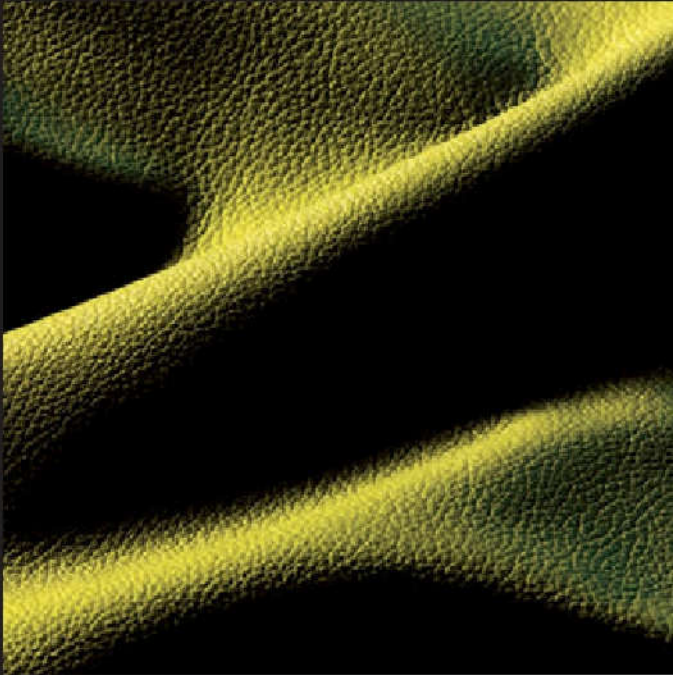


HANS REINKE

# Möbelleder *Upholstery Leather*



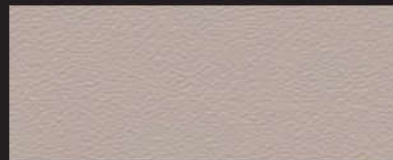
## Simply Leather - Einfach Leder

| pflegeleicht, verschnittgünstig

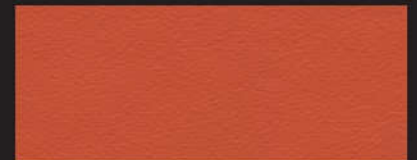
| *easy-care, little offcuts*



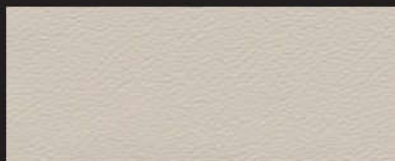
2318 salz



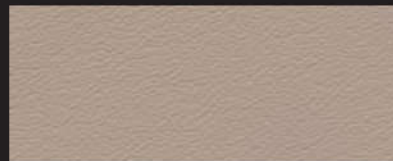
2320 canehl



2303 chili



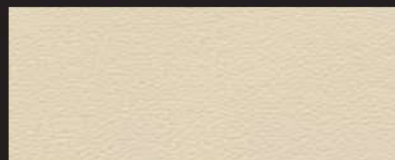
2330 zwiebel



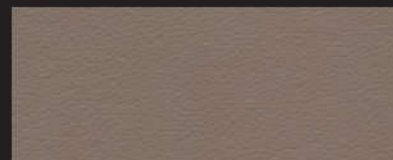
2308 sesam



2302 cayenne



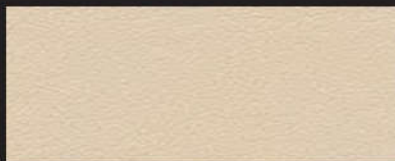
2326 anis



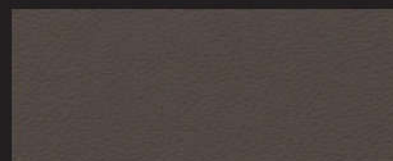
2324 majoran



2315 paprika



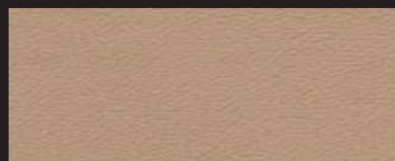
2306 ingwer



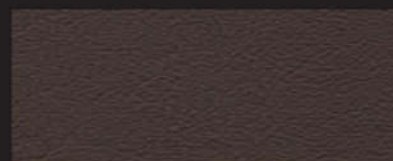
2311 muscat



2304 berberitze



2312 fenchel



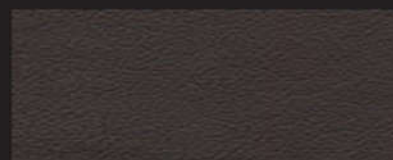
2322 nelke



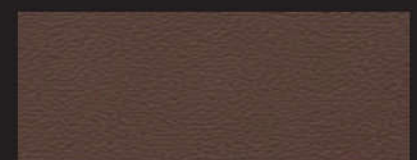
2317 sumach



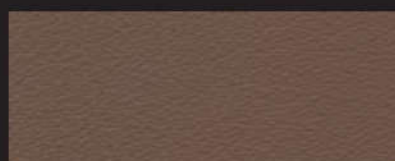
2307 cumin



2323 piment



2305 kümmel



2327 kardamom

# Simply Leather – Einfach Leder

imprägniert, korrigiert, leicht geprägt, Stärke 0,9 bis 1,0 mm  
*impregnated, corrected, slightly embossed, strength 0,9 to 1,0 mm*



2316 safran



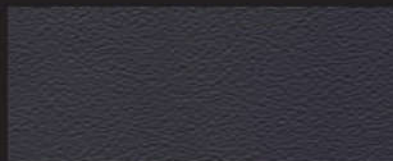
2325 johannisbeere



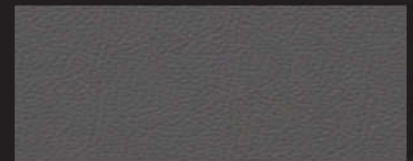
2321 beifuß



2314 rosmarin



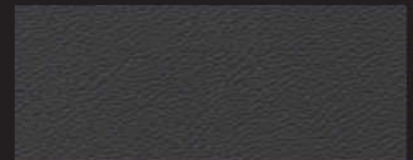
2309 holunder



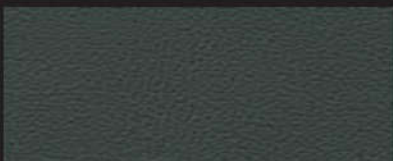
2328 lavendel



2329 koriander



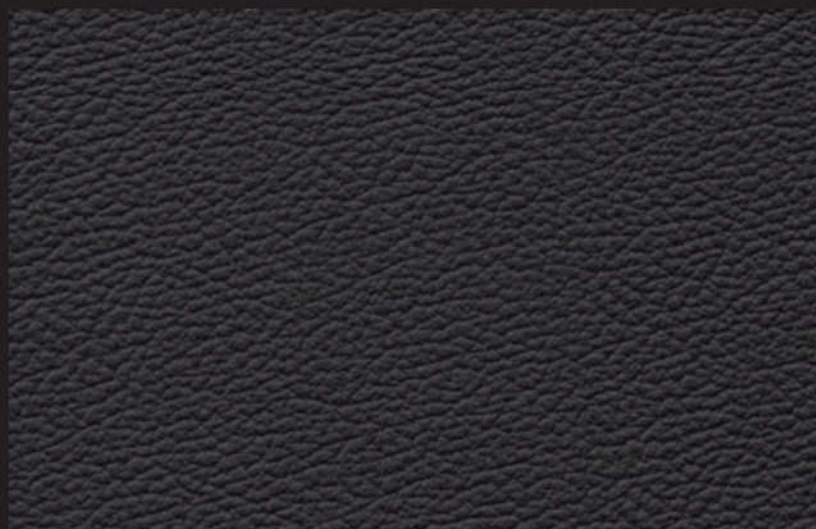
2319 pfeffer



2313 petersilie



2301 tonka schwarz



Kollektionsmuster sind keine Urmuster. Kleine Farbabweichungen sind möglich.  
*Swatches are no master samples. Small differences may occur.*

Technische Werte/ technical specifications	Meßmethode/ test methods	Werte/ values
Stärke/strength		0,9 mm - 1,0 mm
Lichtechtheit/light resistance	IUP 2-0 / UNI EN ISO 105B0	5 blue scale
Reibechtheit/colour fastness to rubbing grey scale trocken/dry naß/wet alkalisch/alkaline	IUF 450 / UNI EN ISO 11640	500 Hübe / ≥4 150 Hübe / ≥4 80 Hübe / ≥4
Dauerfaltverhalten/flexing endurance	IUP 2-0 / UNI EN ISO 5402-	≥ 30.000
Zurichtungshaftung/adhesion	IUP 470 / UNI EN ISO 11644	≥ 3,5 N/cm
Weitereißkraft/tear strength	IUP 40 / UNI EN ISO 3377-1	≥ 2-0 N
Schwerentflammbarkeit/fire resistance	UNI EN ISO 102-1-1/2- BS 5852- 1990 Sec. 4 NI/0-1 California T.B. 117	OK
Hautgröße circa/average size		4,20 qm/sqm
Lieferung ab circa/minimum delivery		2 qm/sqm
<p><b>Simply Leather basiert auf südamerikanischer Rohware. Die Häute haben teilweise Brandzeichen und ein Loch im Nackenbereich.</b></p> <p><i>Simply Leather derives from South American cattle. Due to its nature the hides might have brandings and a hole in the neck area.</i></p>		



Hans Reinke  
Handelsgesellschaft mbH

Brandstücken 20      Tel. +49 40 39 1068-0  
22549 Hamburg      Fax +49 40 39 10 68-29  
info@hans-reinke.com      www.hans-reinke.com

HOLLAND, BELGIUM & LUXEMBOURG



Hans Reinke Benelux B.V.

D'n Oliepint 2      Tel. +31 13 505 6702  
5081 NT Hilvarenbeek      Fax +31 13 505 3073  
Netherlands      info@hans-reinke.nl

SWITZERLAND & AUSTRIA



Jörg & Reinke GmbH

Bahnhofstrasse 42      Tel. +41 34 402 5005  
CH-6162      Fax +41 34 402 5553  
Entlebuch      info@joerg-leder.ch

POLAND



Automotive Textiles

Jakub Ponczyński      Tel. +48 42 288 10 10  
93-490 Łódź      Mob. +48 513 014 610  
Pabianicka 119/131      jakub@ponczynski.com